



**Ministry of Social Affairs of Estonia,
Department of Health Information and
Analysis**

**Health Statistics and Medical Technologies
State Agency of Latvia,
Health Statistics Department**

Lithuanian Health Information Centre

Health in the Baltic Countries
2006

14-th edition

2007

Preface

In the 15th edition “Health in the Baltic Countries 2006” there are presented the latest data of health statistics in the Baltic Countries – Republic of Estonia, Republic of Latvia and Republic of Lithuania. The most important figures of population health – demographics, mortality causes, spread of several diseases as well as health care resources and utilization – are included in the publication.

Annual and special reports of medical institutions, computerized health databases and registers are the basic data sources. Some data of vital statistics come from the official publications of the state statistics offices of the Baltic Countries.

This publication is a joint issue of Ministry of Social Affairs of Estonia, Department of Health Information and Analysis, Health Statistics and Medical Technologies State Agency of Latvia and Lithuanian Health Information Centre. These institutions can provide more comprehensive data if necessary.

Population at 01.01.2007

	Estonia	Latvia	Lithuania
Population (thousand)	1342.4	2281.3	3384.9
Per 1 km²	31.0	35.3	52.0
Urban (thousand)	931.4	1559.4	2260.2
%	69.4	68.0	66.8
Rural (thousand)	411.0	735.1	1124.7
%	30.6	32.0	33.2
Males (thousand)	618.2	1057.2	1577.0
%	46.1	46.1	46.6
Females (thousand)	724.2	1237.3	1807.9
%	53.9	53.9	53.4
Under working age (%)	16.2	14.0	17.4
Working age (%)	64.2	65.3	63.1
Over working age (%)	19.6	20.7	19.5
Working age			
Males	16-63	15-61	16-62 years and 6 months
Females	16-60	15-60	16-60

Health in the Baltic countries

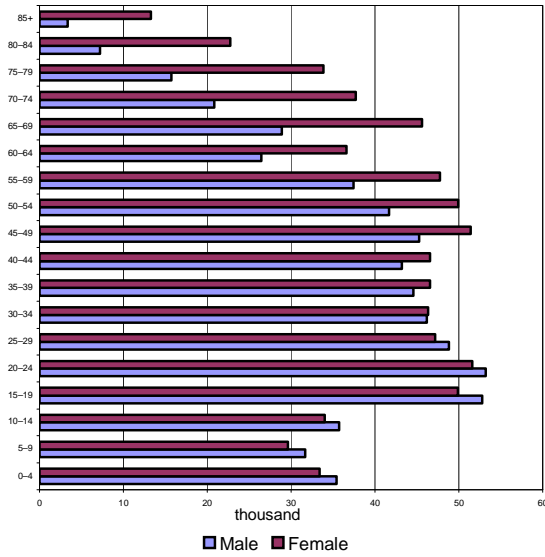
General data

	Estonia	Latvia	Lithuania
Official name of the state	Republic of Estonia (Eesti Vabariik)	Republic of Latvia (Latvijas Republika)	Republic of Lithuania (Lietuvos Respublika)
Independence Day	24 February (1918)	18 November (1918)	16 February (1918)
State's governing body	Parliament (Riigikogu), 101 members, elected for the period of 4 years	Parliament (Saeima), 100 members, elected for the period of 4 years	Parliament (Seimas), 141 members, elected for the period of 4 years
Governmental structure	Republic, the President is elected for the period of 5 years	Republic, the President is elected for the period of 4 years	Republic, the President is elected for the period of 5 years
Area (thousand km ²)	45.2	64.6	65.3
Major islands	Saaremaa, 2671 km ² Hiiumaa, 989 km ² Muhu, 198 km ²	-	-
Major rivers	Võhandu, 162 km (through lake Tamula) Pärnu, 144 km Põltsamaa, 135 km	Daugava, 1005 km Gauja, 452 km Venta, 346 km	Nemunas, 937.4 km Neris, 509.5 km Venta, 346 km
Major lakes	Peipsi, 3555 km ² (in Estonia 1529 km ²) Võrtsjärv, 271 km ² Narva veehoidla (artificial lake) 191 km ² (in Estonia 38 km ²)	Lubāns, 80.7 km ² Rāzna, 57.6 km ² Engure, 40.5 km ²	Drūkšiai, 44.8 km ² Dysnai, 24.4 km ² Dusia, 23.3 km ²
The highest point	Suur Munamägi, 318 m	Gaiziņkalns, 311.6 m	Juozapinė, 293.6 m
Average daily temperature in January 2006	-4.6 °C	-5.9 °C	-7.1 °C
Average daily temperature in July 2006	+18.9 °C	+20.7 °C	+20.5 °C
Administrative units	15 counties, 33 cities, 14 cities without municipal status, 194 rural municipalities	26 counties, 26 districts, 77 cities and towns, 432 rural municipalities	10 counties, 103 cities and towns, 60 rural municipalities
Capital, inhabitants (thousand)	Tallinn 396.9*	Riga 722.5*	Vilnius 554.4*
Official language	Estonian	Latvian	Lithuanian
National currency	Estonian kroon=100 cents 1 EEK = 0.064 EUR	Latvian lats=100 santims 1 LVL = 1.423 EUR	Lithuanian lits=100 centas 1 LTL = 0.290 EUR

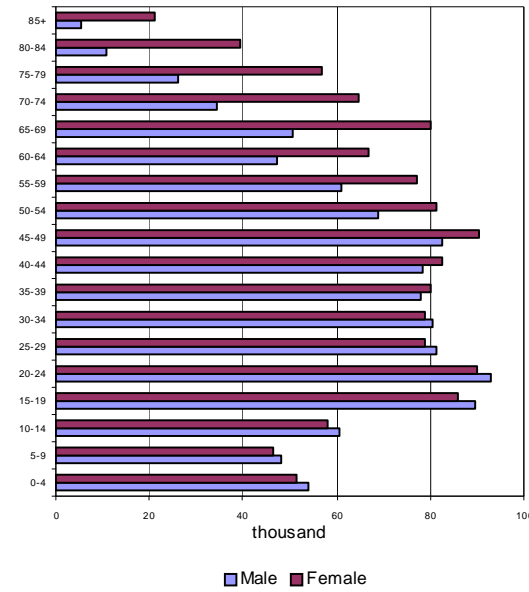
* Population - beginning of 2007

Health in the Baltic countries

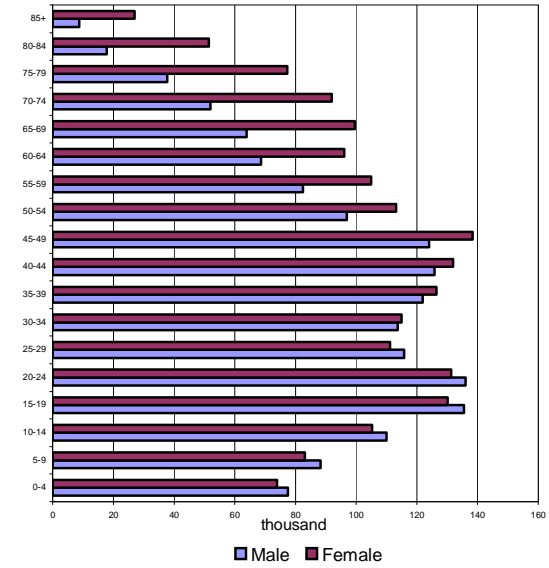
Population by age at 01.01.2007



Estonia

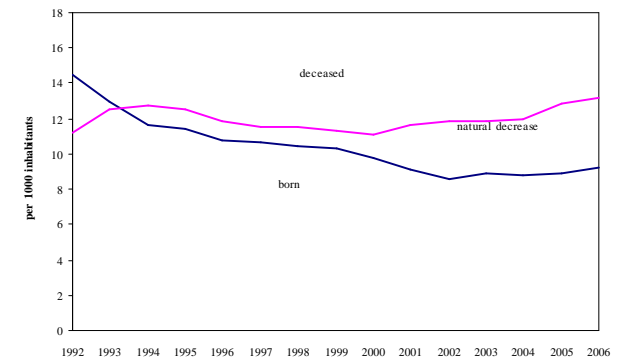
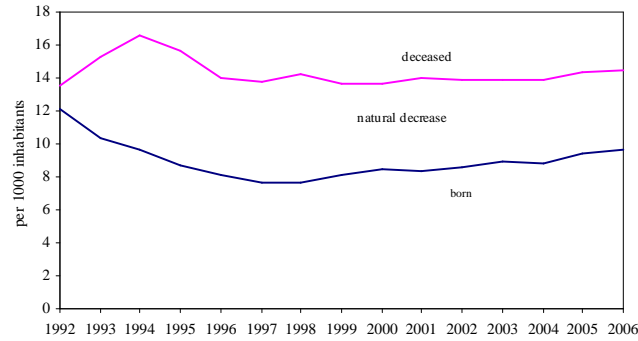
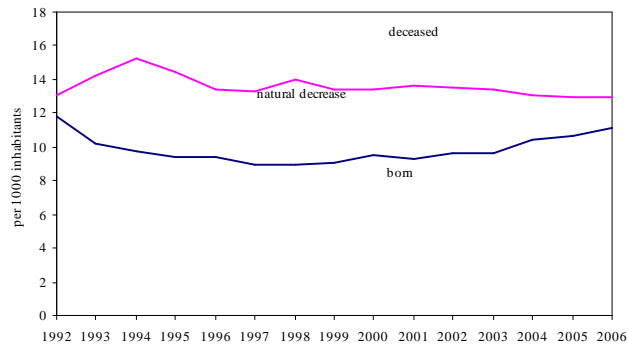


Latvia



Lithuania

Trends of demographics indicators



Health in the Baltic countries

Resident population by age and sex at 01.01.2007

	Estonia						Latvia						Lithuania					
	Total		Males		Females		Total		Males		Females		Total		Males		Females	
	Number	%	Number	%	Number	%	Number	%	Number	%	Number	%	Number	%	Number	%	Number	%
Total	1342409	100.0	618245	100.0	724164	100.0	2281305	100.0	1051034	100.0	1230271	100.0	3384879	100.0	1576963	100.0	1807916	100.0
0-4	68820	5.1	35407	5.7	33413	4.6	105206	4.6	53871	5.1	51335	4.2	151315	4.47	77470	4.91	73845	4.08
5-9	61238	4.6	31668	5.1	29570	4.1	94661	4.1	48307	4.6	46354	3.8	171422	5.06	88268	5.60	83154	4.60
10-14	69686	5.2	35680	5.8	34006	4.7	118596	5.2	60701	5.8	57895	4.7	215386	6.36	110049	6.98	105337	5.83
15-19	102512	7.6	52579	8.5	49933	6.9	175489	7.7	89560	8.5	85929	7.0	265721	7.85	135540	8.60	130181	7.20
20-24	104808	7.8	53171	8.6	51637	7.1	182970	8.0	93054	8.9	89916	7.3	267385	7.90	136105	8.63	131280	7.26
25-29	96016	7.2	48829	7.9	47187	6.5	160012	7.0	81249	7.7	78763	6.4	226912	6.70	115719	7.34	111193	6.15
30-34	92491	6.9	46180	7.5	46311	6.4	159586	7.0	80653	7.7	78933	6.4	228712	6.76	113760	7.21	114952	6.36
35-39	91130	6.8	44582	7.2	46548	6.4	158306	6.9	78209	7.4	80097	6.5	248303	7.34	121875	7.73	126428	6.99
40-44	89774	6.7	43215	7.0	46559	6.4	161228	7.1	78489	7.5	82739	6.7	257819	7.62	125838	7.98	131981	7.30
45-49	96700	7.2	45266	7.3	51434	7.1	172975	7.6	82404	7.8	90571	7.4	262434	7.75	124110	7.87	138324	7.65
50-54	91610	6.8	41682	6.7	49928	6.9	150151	6.6	68861	6.6	81290	6.6	210103	6.21	96914	6.15	113189	6.26
55-59	85190	6.3	37435	6.1	47755	6.6	138092	6.1	60865	5.8	77227	6.3	187456	5.54	82555	5.24	104901	5.80
60-64	63065	4.7	26469	4.3	36596	5.1	114072	5.0	47269	4.5	66803	5.4	164640	4.86	68618	4.35	96022	5.31
65-69	74530	5.6	28890	4.7	45640	6.3	130977	5.7	50759	4.8	80218	6.5	163563	4.83	63978	4.06	99585	5.51
70-74	58531	4.4	20827	3.4	37704	5.2	99212	4.3	34446	3.3	64766	5.3	143891	4.25	51952	3.29	91939	5.09
75-79	49557	3.7	15715	2.5	33842	4.7	82971	3.6	26031	2.5	56940	4.6	115005	3.40	37732	2.39	77273	4.27
80-84	29912	2.2	7191	1.2	22721	3.1	50245	2.2	10734	1.0	39511	3.2	69110	2.04	17734	1.12	51376	2.84
85+	16628	1.2	3359	0.5	13269	1.8	26556	1.2	5572	0.5	20984	1.7	35702	1.05	8746	0.55	26956	1.49
Unknown	211	0.0	100	0.0	111	0.0	-	-	-	-	-	-	-	-	-	-	-	-

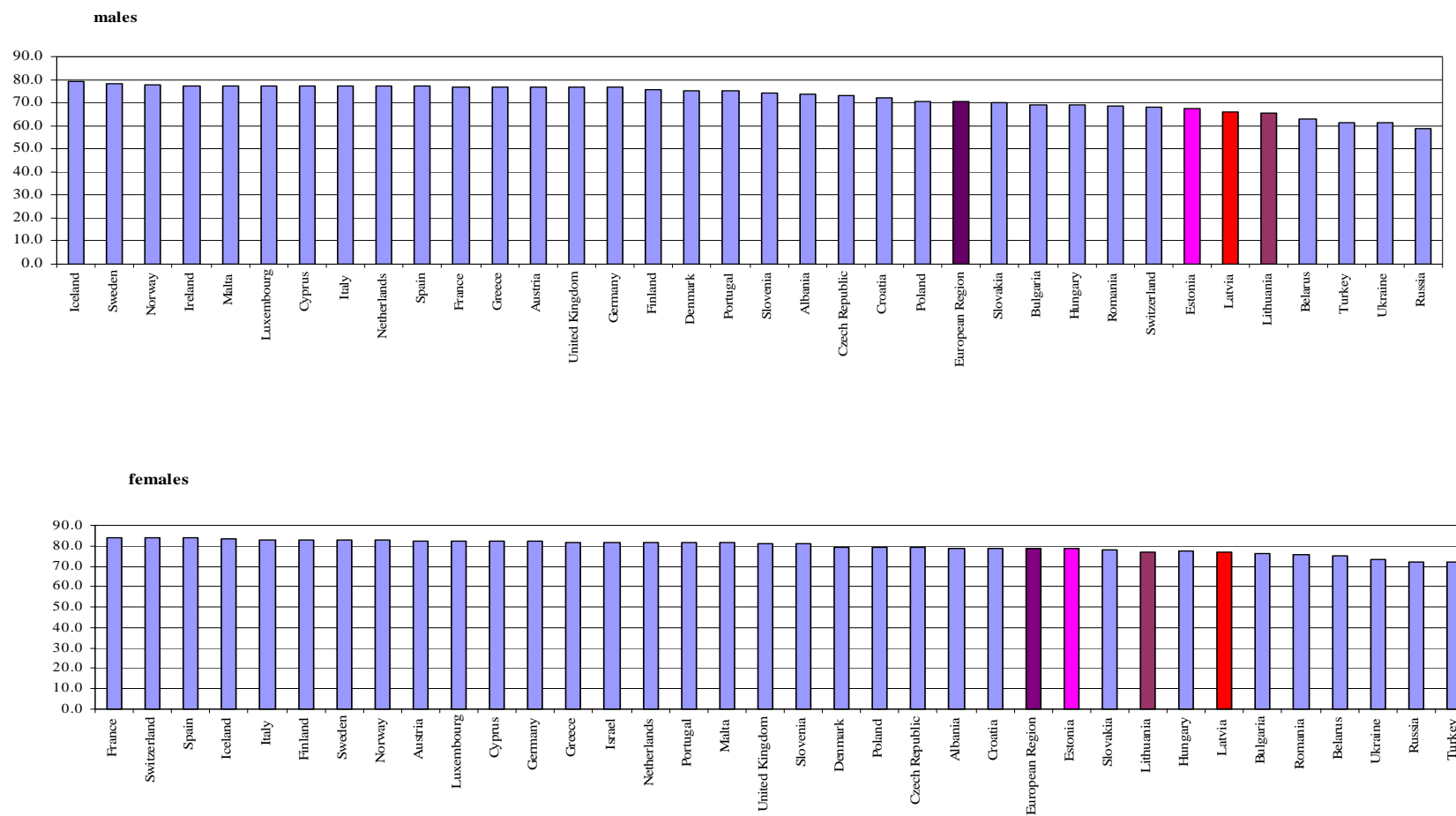
Health in the Baltic countries

Natality, general mortality and natural increase per 1000 population

Years	Estonia			Latvia			Lithuania		
	Natality	General mortality	Natural increase	Natality	General mortality	Natural increase	Natality	General mortality	Natural increase
1950	18.4	14.4	4.0	17.6	12.9	4.7	23.6	12.0	11.6
1960	16.6	10.5	6.1	16.7	10.0	6.7	22.5	7.8	14.7
1965	14.8	10.6	4.2	13.8	10.1	3.7	18.1	7.9	10.2
1970	16.0	11.2	4.8	14.6	11.3	3.3	17.7	8.9	8.8
1975	15.0	11.6	3.4	14.2	12.2	2.0	15.7	9.5	6.2
1980	14.9	12.4	2.5	14.1	12.8	1.3	15.2	10.5	4.7
1985	15.5	12.6	2.9	15.4	13.2	2.2	16.5	11.1	5.4
1990	14.2	12.4	1.8	14.2	13.1	1.1	15.4	10.8	4.6
1991	12.4	12.6	-0.2	13.1	13.1	0.0	15.2	11.1	4.1
1992	11.8	13.1	-1.3	12.1	13.5	-1.4	14.5	11.2	3.3
1993	10.2	14.2	-4.0	10.4	15.3	-4.9	12.9	12.5	0.4
1994	9.7	15.2	-5.5	9.6	16.6	-7.0	11.6	12.7	-1.1
1995	9.4	14.5	-5.1	8.7	15.7	-7.0	11.4	12.5	-1.1
1996	9.4	13.4	-4.0	8.1	14.0	-5.9	10.8	11.9	-1.1
1997	9.0	13.3	-4.3	7.7	13.8	-6.1	10.6	11.5	-0.9
1998	8.8	14.0	-5.2	7.6	14.2	-6.6	10.4	11.5	-1.1
1999	9.0	13.4	-4.4	8.1	13.7	-5.6	10.3	11.3	-1.0
2000	9.5	13.4	-3.9	8.5	13.6	-5.1	9.8	11.1	-1.3
2001	9.3	13.6	-4.3	8.3	14.0	-5.7	9.1	11.6	-2.5
2002	9.6	13.5	-3.9	8.6	13.9	-5.3	8.6	11.8	-3.2
2003	9.6	13.4	-3.8	9.0	13.9	-4.9	8.9	11.9	-3.0
2004	10.4	13.1	-2.7	8.8	13.9	-5.1	8.8	12.0	-3.2
2005	10.7	12.9	-2.2	9.4	14.2	-4.8	8.9	12.8	-3.9
2006	11.1	12.9	-1.8	9.7	14.5	-4.7	9.2	13.2	-4.0

Health in the Baltic countries

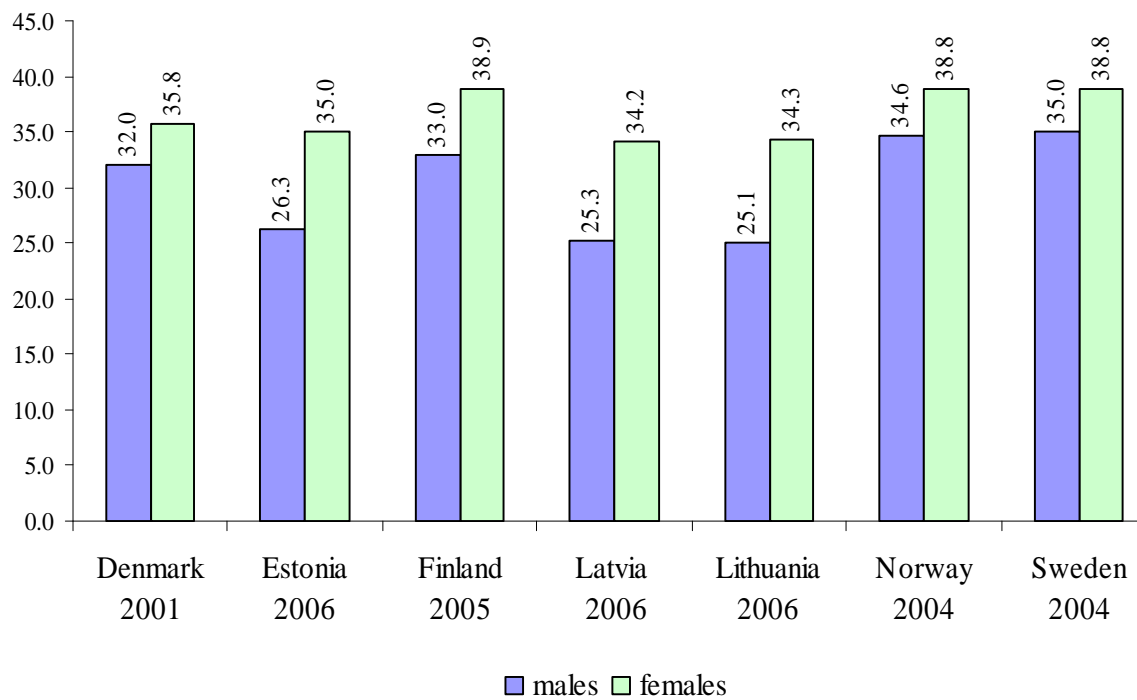
Life expectancy at birth in European countries*



* Data for Latvia, Lithuania and Estonia – 2006, other countries 2001-2005

Health in the Baltic countries

Life expectancy at the age 45 years

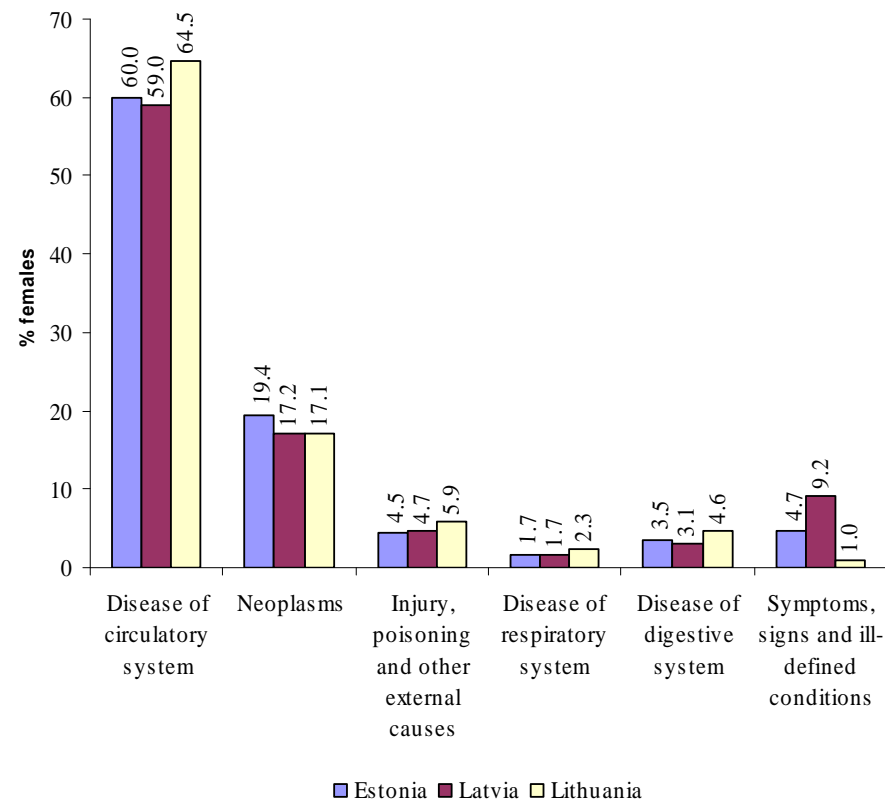
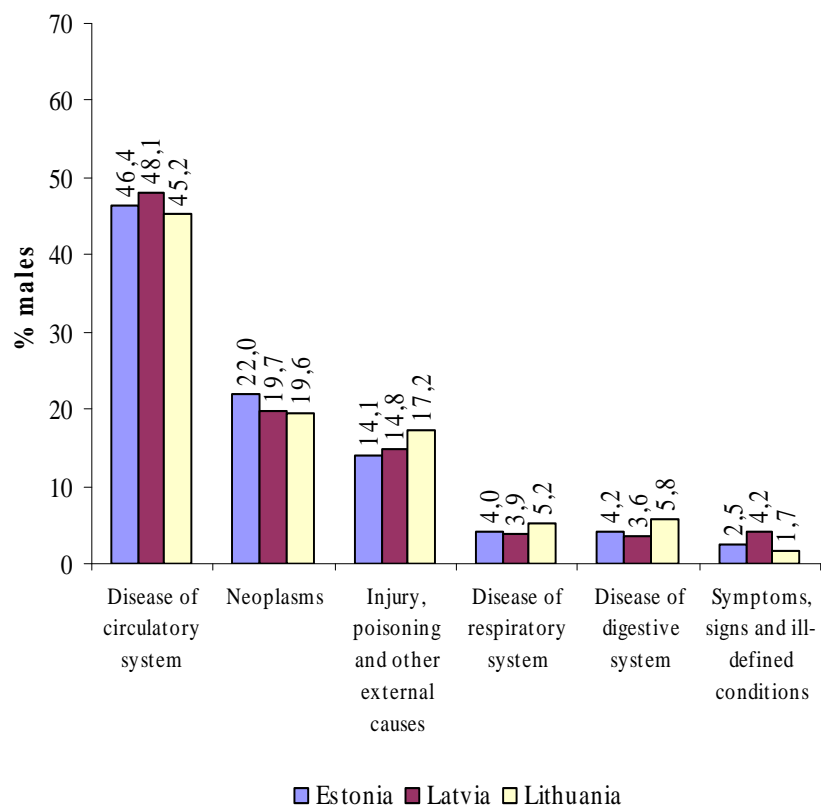


Health in the Baltic countries

Deaths by cause per 100,000 population in 2006

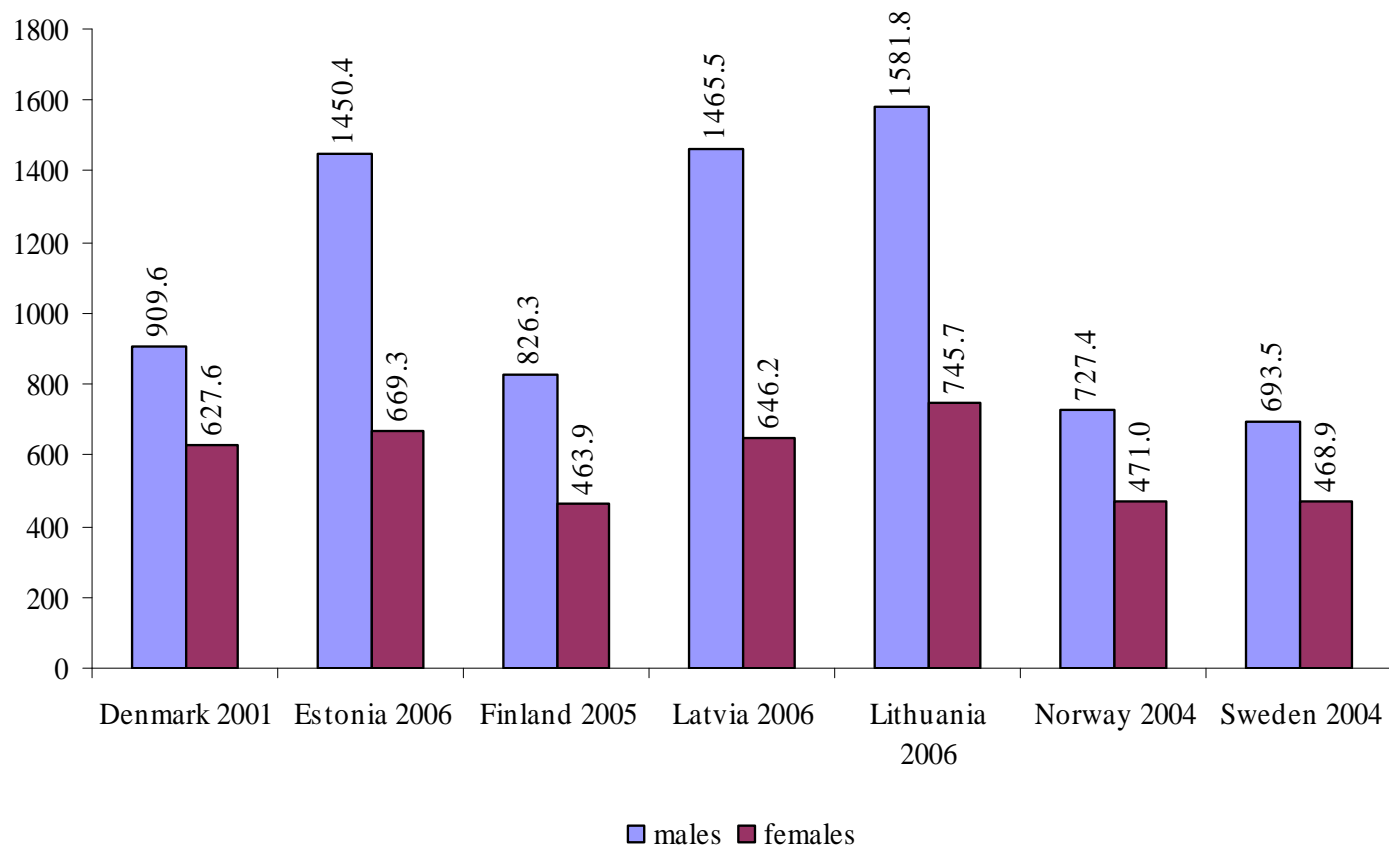
Causes of death	Estonia			Latvia			Lithuania		
	Total	Males	Females	Total	Males	Females	Total	Males	Females
Certain infectious and parasitic diseases	11.1	17.3	5.8	12.9	19.3	7.5	15.1	23.1	8.2
Neoplasms	266.8	314.2	226.4	267.2	311.8	229.1	243.6	295.4	198.4
Diseases of the blood and blood-forming organs and certain disorders involving the immune mechanisms	0.2	0.5	0.0	1.3	1.0	1.5	1.0	1.1	0.9
Endocrine, nutritional and metabolic diseases	19.7	14.7	24.0	13.4	9.7	16.6	10.7	10.2	11
Mental and behavioural disorders	12.1	18.3	6.8	5.5	7.2	4.1	2.4	3.6	1.4
Diseases of the nervous system	20.9	25.9	16.7	15.4	19.5	11.9	16.7	20.7	13.4
Diseases of the eye and adnexa	0.0	0.0	0.0	0.0	0.0	0.0	0.0	0.0	0.0
Diseases of the ear and mastoid process	0.1	0.0	0.1	0.1	0.0	0.2	0.1	0.1	0.0
Diseases of the circulatory system	683.8	663.7	700.9	774.9	761.0	786.8	716.6	680.8	747.8
Diseases of the respiratory system	36.9	57.2	19.6	39.9	60.9	22.0	50.4	78	26.3
Diseases of the digestive system	49.6	60.3	40.6	48.5	57.3	41.0	69.0	87.6	52.8
Diseases of the skin and subcutaneous tissue	1.6	1.5	1.7	2.6	2.5	2.8	1.2	1.7	0.8
Diseases of the musculoskeletal system and connective tissue	3.1	3.1	3.0	3.6	3.4	3.8	3.0	2.0	3.8
Diseases of the genitourinary system	9.6	9.4	9.8	16.3	19.1	14.0	9.1	10.2	8.2
Pregnancy, childbirth and puerperium	-	-	0.1	-	-	0.2	-	-	0.0
Certain conditions originating in perinatal period	1.9	2.7	1.2	3.5	4.5	2.8	2.2	2.6	1.8
Congenital malformations, deformations and chromosomal abnormalities	3.2	3.9	2.6	4.2	4.0	4.4	4.1	4.5	3.8
Symptoms, signs and abnormal clinical and laboratory findings, not elsewhere classified	46.1	36.0	54.8	96.4	66.2	122.2	18.0	25.3	11.5
Injury, poisoning and certain other consequences of external causes	121.2	201.4	52.7	141.6	234.3	62.4	157.2	258.4	68.9
TOTAL	1288.8	1430.7	1167.7	1447.5	1581.4	1333.1	1320.3	1505.2	1159.0

Main causes of death in 2006



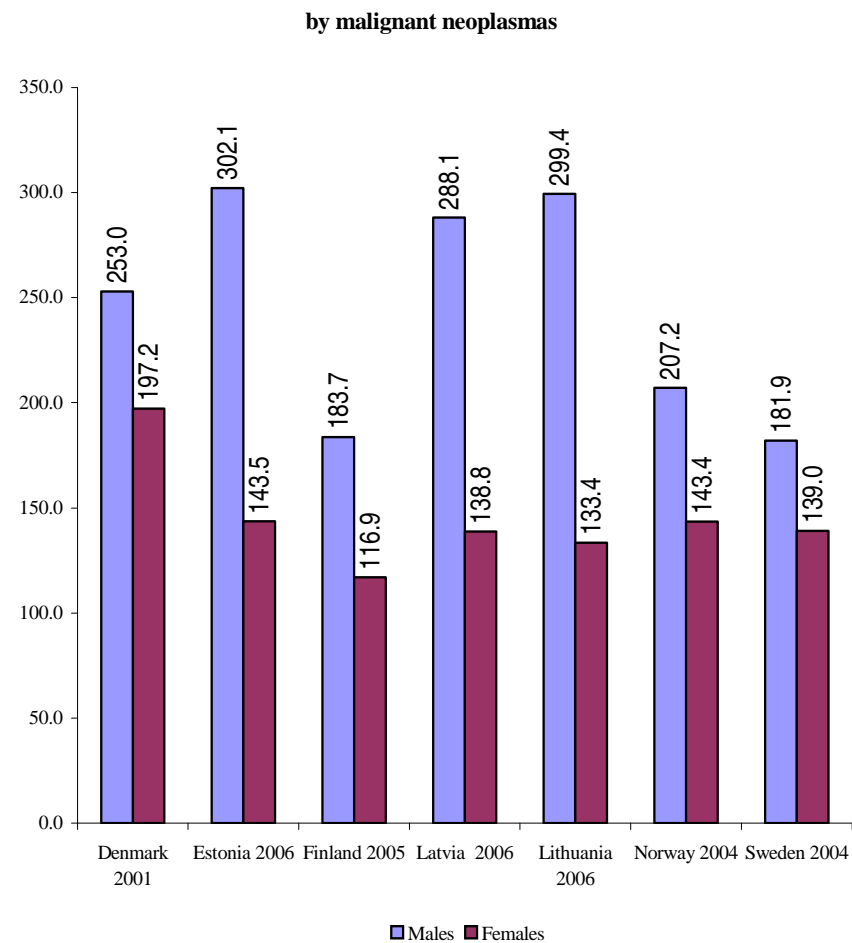
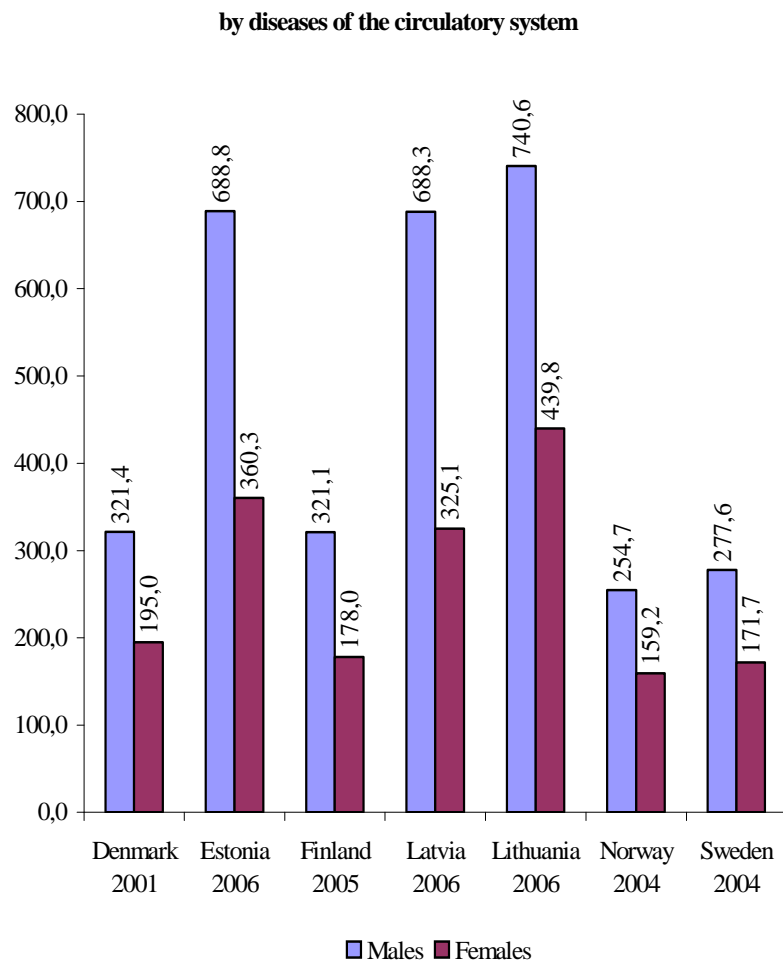
Health in the Baltic countries

Age-standardized death rates (per 100,000 European standard population)



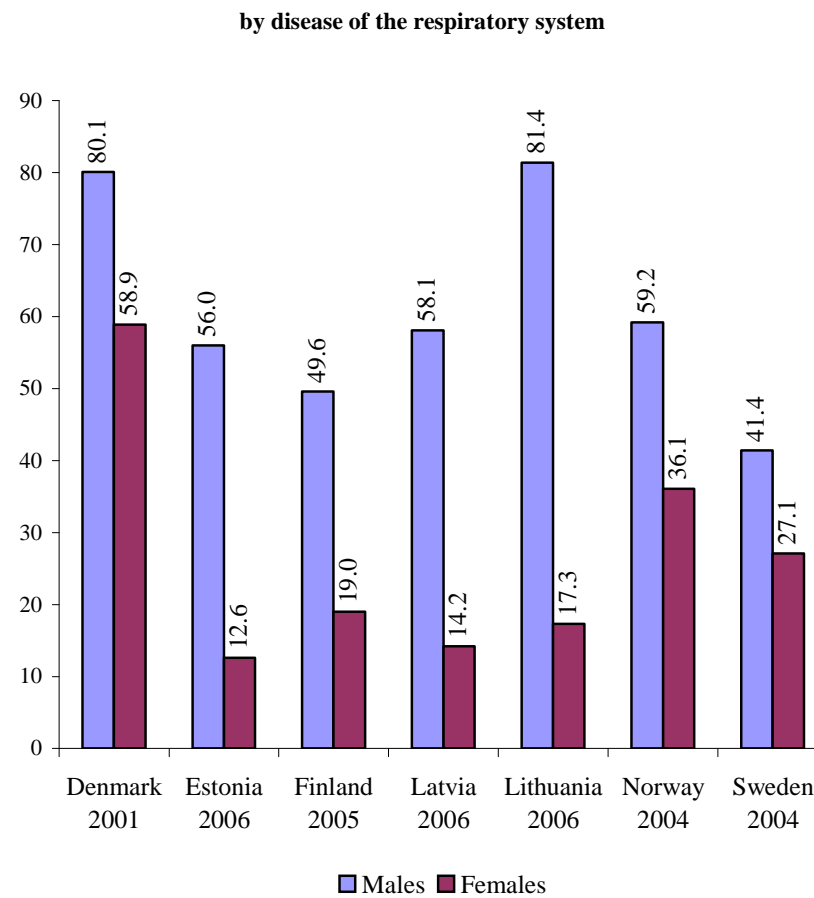
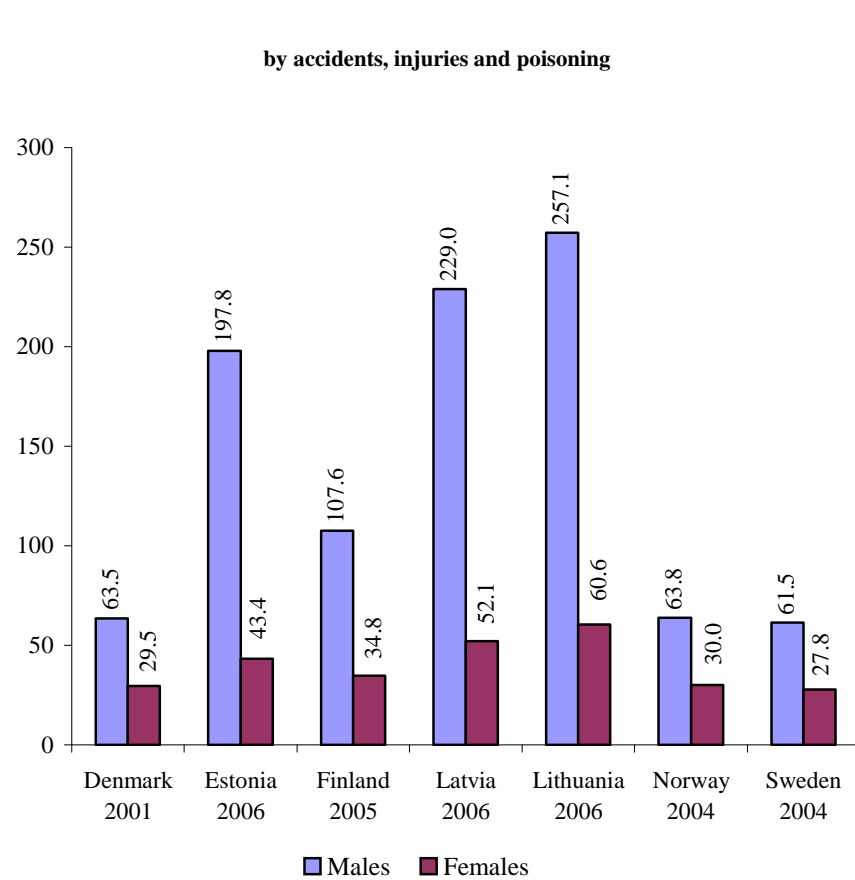
Health in the Baltic countries

Age-standardized death rates (per 100,000 European standard population)



Health in the Baltic countries

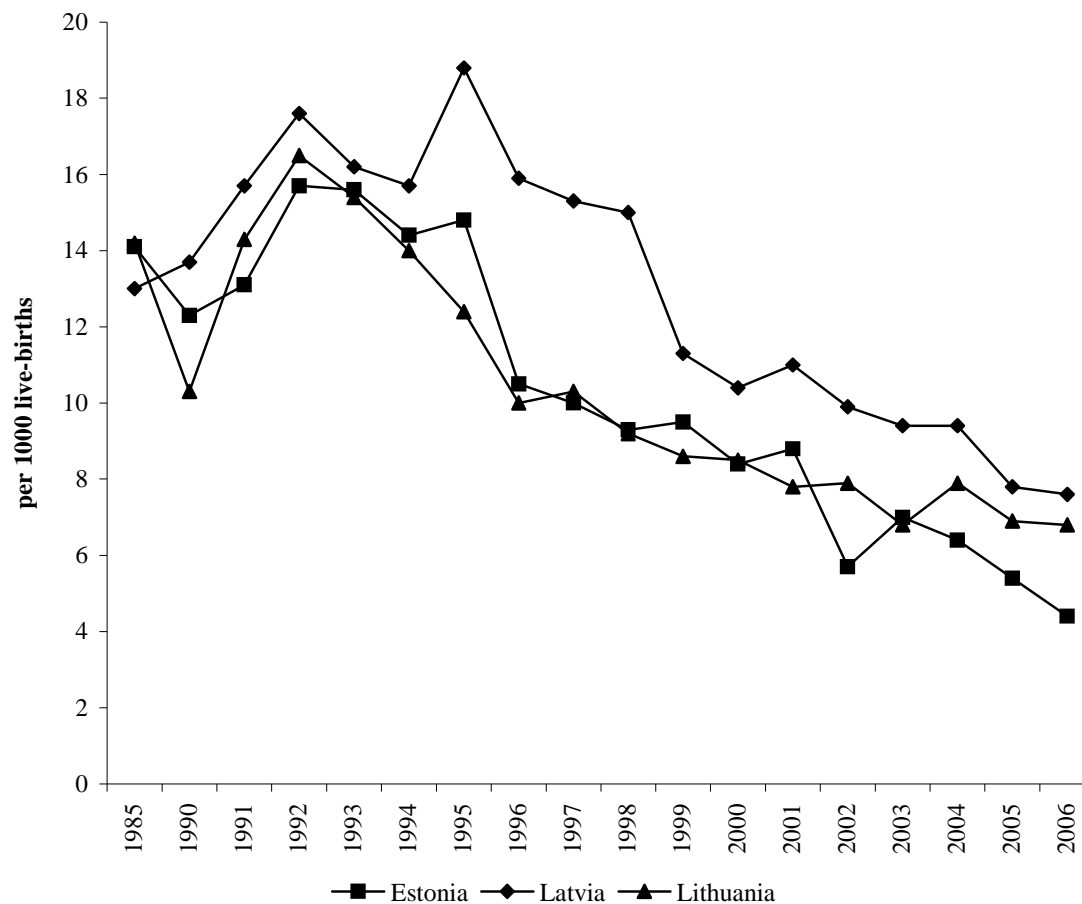
Age-standardized death rates (per 100,000 European standard population)



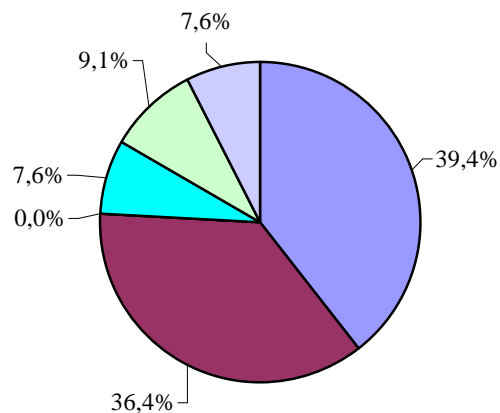
Health in the Baltic countries

Years	Estonia	Latvia	Lithuania
1935	-	78.9	-
1940	84.9	74.9	98.5
1960	31.6	27.0	46.5
1965	20.3	18.6	35.4
1970	17.7	17.9	19.4
1975	18.2	20.3	19.6
1980	17.1	15.4	14.4
1985	14.1	13.0	14.2
1990	12.3	13.7	10.3
1991	13.1	15.7	14.3
1992	15.7	17.6	16.5
1993	15.6	16.2	15.4
1994	14.4	15.7	14.0
1995	14.8	18.8	12.4
1996	10.5	15.9	10.0
1997	10.0	15.3	10.3
1998	9.3	11.3	9.2
1999	9.5	11.3	8.6
2000	8.4	10.4	8.5
2001	8.8	11.0	7.8
2002	5.7	9.9	7.9
2003	7.0	9.4	6.8
2004	6.4	9.4	7.9
2005	5.4	7.8	6.9
2006	4.4	7.6	6.8

Infant mortality
(per 1000 live-births)

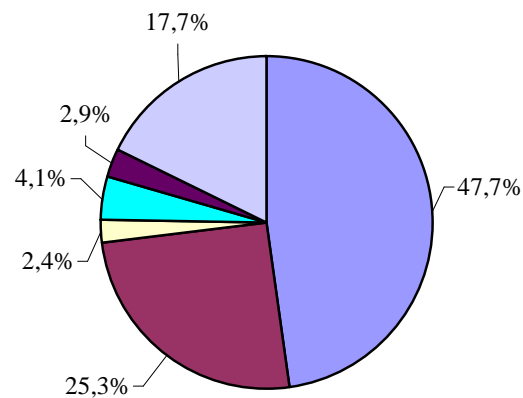


Structure of infant mortality (%) in 2006



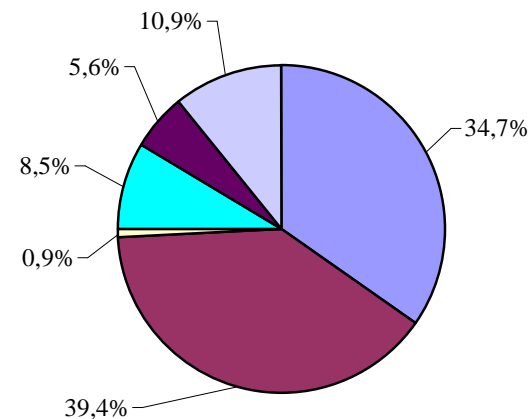
Estonia

- Perinatal conditions
- Congenital anomalies
- Infectious and parasitic diseases
- Injuries and poisoning
- Diseases of the nervous system and senses organs
- Other causes



Latvia

- Perinatal conditions
- Congenital anomalies
- Infectious and parasitic diseases
- Injuries and poisoning
- Diseases of the respiratory system
- Other causes



Lithuania

- Perinatal conditions
- Congenital anomalies
- Infectious and parasitic diseases
- Injuries and poisoning
- Diseases of the respiratory system
- Other causes

Infant mortality by causes
per 10,000 live births in 2006

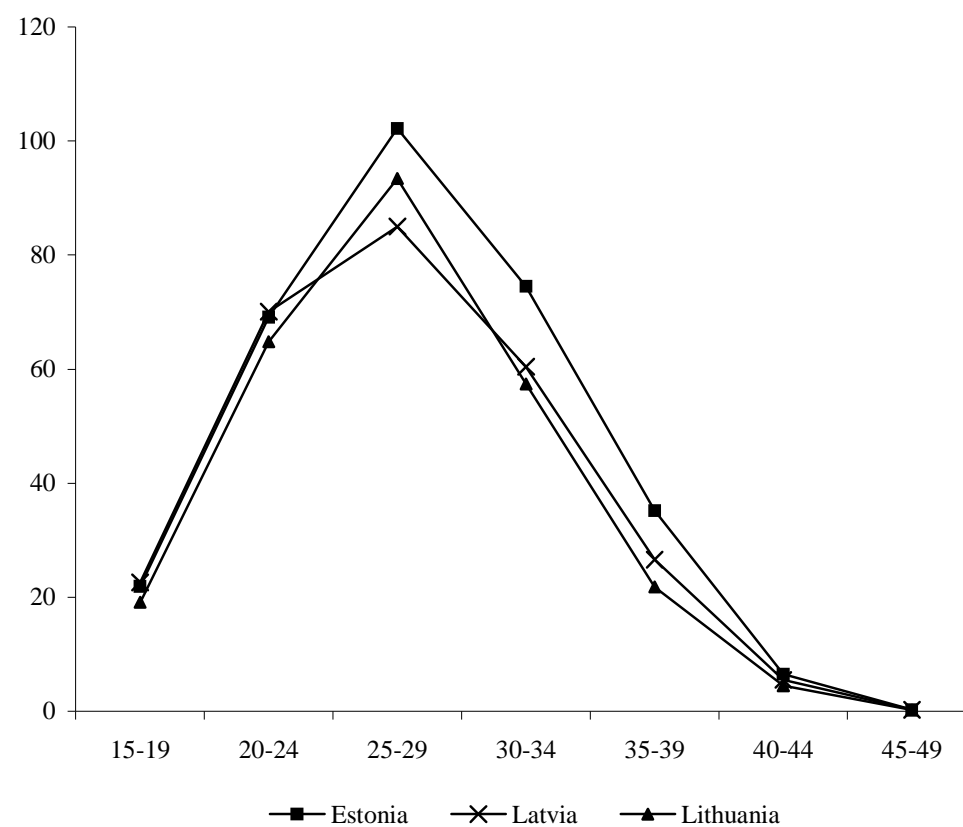
	Estonia		Latvia		Lithuania	
	Rate	%	Rate	%	Rate	%
Certain conditions originating in the perinatal period	17.5	39.4	36.3	47.7	23.8	34.7
Congenital anomalies	16.1	36.4	19.3	25.3	27.0	39.4
Diseases of the respiratory system	0.0	0.0	2.2	2.9	3.9	5.6
Infectious and parasitic diseases	0.0	0.0	1.8	2.4	0.6	0.9
Accidents, injury and poisoning	3.4	7.6	3.1	4.1	5.8	8.5
Diseases of the nervous system and sense organs	4.0	9.1	0.0	0.0	1.6	2.4
Diseases of the digestive system	0.0	0.0	0.9	1.2	0.0	0.0
Other causes	3.4	7.6	12.6	16.5	5.7	8.5
TOTAL	44.4	100	76.2	100	68.4	100

Perinatal, neonatal and maternal mortality
in 2006

	Estonia	Latvia	Lithuania
Perinatal mortality per 1000 births	5.4	10.4	7.3
Still-birth rate per 1000 births	3.8	6.9	4.4
Neonatal mortality per 1000 live births	2.7	4.7	3.9
Early neonatal mortality per 1000 live births	1.7	3.6	2.9
Maternal mortality per 100,000 live births	6.7	13.5	0.0
Standard perinatal mortality	3.6	7.4	4.6
Standard still-birth rate	3.0	4.5	3.5

Birth rates by age of mother in 2006
per 1000 women

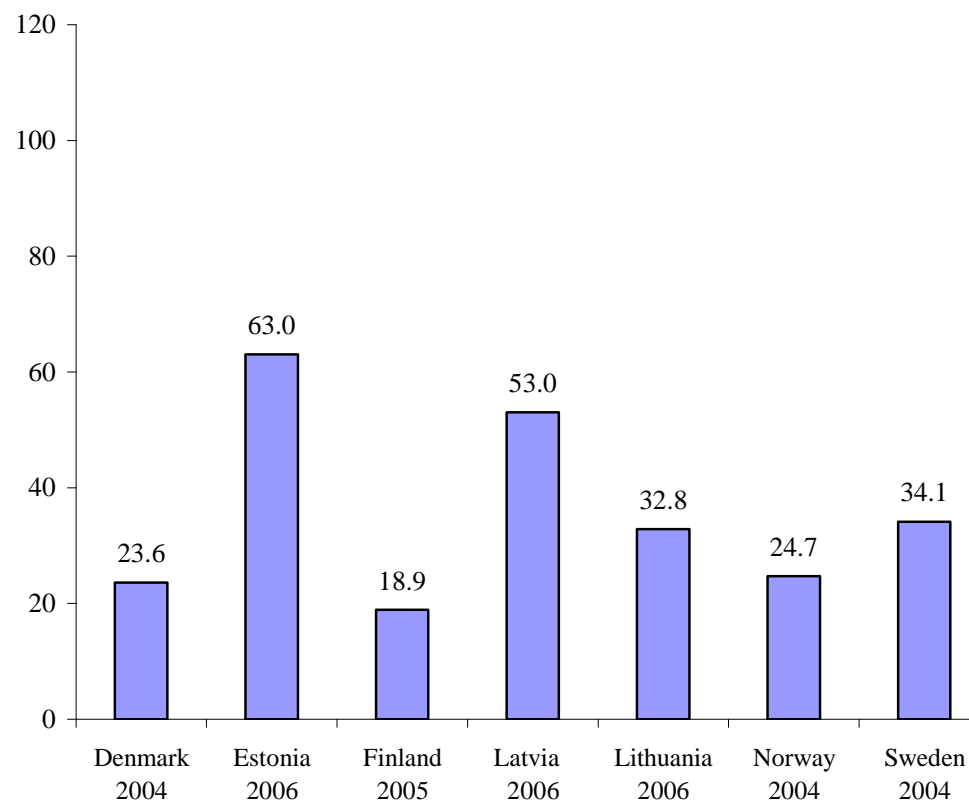
	Estonia	Latvia	Lithuania
Women 15-49 years of age	43.7	37.9	35.3
Of them by age:			
15-19	21.9	22.6	19.1
20-24	69.1	70.1	64.8
25-29	102.2	85.0	93.4
30-34	74.5	60.4	57.4
35-39	35.2	26.6	21.8
40-44	6.5	5.5	4.5
45-49	0.3	0.3	0.2
Total fertility rate	1.55	1.35	1.31



Abortions in 2006

	Estonia	Latvia	Lithuania
All abortions			
Total number	11 625	16278	14976
Per 1000 women aged 15-49 years	34.1	27.7	16.9
Per 100 live births	78.1	73.0	51.5
Induced abortions			
Total number	9378	11825	9536
Per 1000 women aged 15-49 years	27.5	20.1	10.8
Per 100 live births	63.0	53.0	32.8
Percentage			
Spontaneous abortions	7.2	24.9	26.8
Legal abortions	78.8	71.1	62.9
Medical abortions	1.9	1.5	0.7
Other abortions	12.1	2.5	9.6

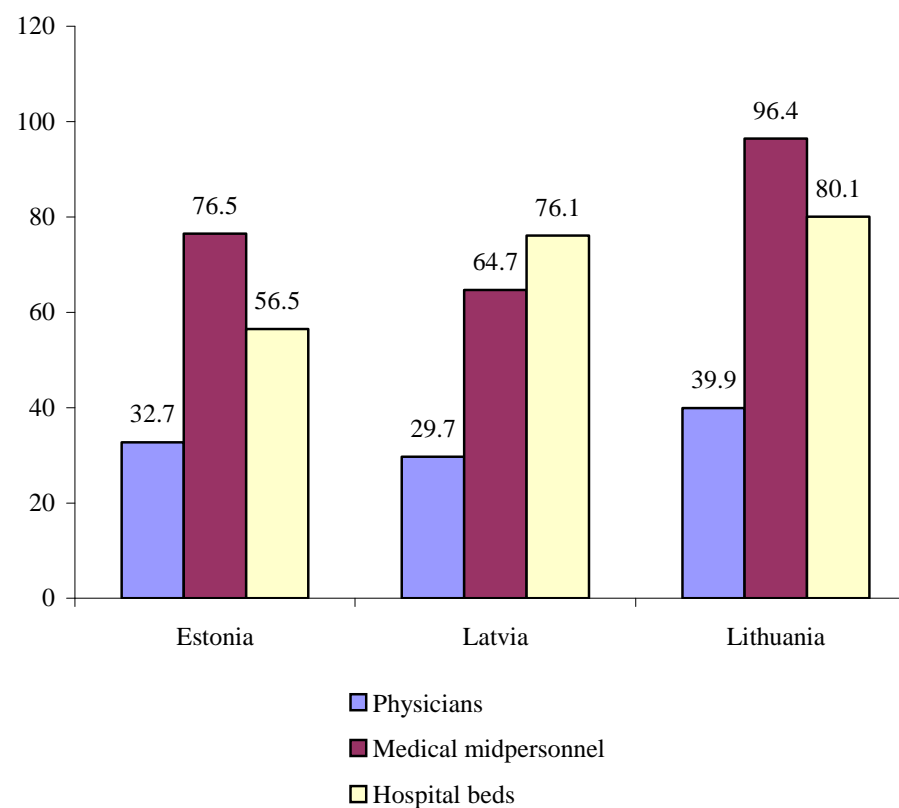
Induced abortions per 100 live births



Health facilities in 2006

	Estonia	Latvia	Lithuania
Hospitals	55	106	174
Hospital beds:			
Thousand	7.6	17.4	27.1
Per 10,000 population	56.5	76.1	80.1
Physicians:			
Thousand	4.4	6.8	13.5
Per 10,000 population	32.7	29.7	39.9
Dentists:			
Thousand	1.2	1.6	2.3
Per 10,000 population	8.9	6.8	6.6
Medical midpersonnel:			
Thousand	10.3	14.8	32.6
Per 10,000 population	76.5	64.7	96.4
Hospital admission:			
Thousand	252.9	529.1	788.5
Per 100 population	18.5	23.1	23.2
Physicians visits:			
Million	8.5	12.4	22.3
Per 1 inhabitant	6.3	5.4	6.6

Number of physicians, medical midpersonnel and hospital beds per 10,000 population in 2006



Health in the Baltic countries

Physicians by speciality at the end of 2006

	Estonia		Latvia		Lithuania	
	Number	Per 10,000 population	Number	Per 10,000 population	Number	Per 10,000 population
TOTAL *	4393	32.7	6780	29.7	13510	39.9
Of them:						
Family doctors and general practitioners	853	6.4	1283	5.6	1792	5.3
Internal medicine **	524	3.9	750	3.3	2279	6.7
Surgery ***	404	3.0	645	2.8	1228	3.6
Paediatrics	241	1.8	312	1.4	1270	3.8
Gynaecology (include obstetrics)	272	2.0	469	2.1	800	2.4
Oncology	30	0.2	78	0.3	120	0.4
Otolaryngology	100	0.7	160	0.7	291	0.9
Ophthalmology	112	0.8	229	1.0	340	1.0
Anaesthesiology	255	1.9	370	1.6	600	1.8
Neurology	131	1.0	253	1.1	495	1.5
Psychiatry	181	1.3	259	1.1	559	1.7
Narcology	-	-	78	0.3	35	0.1
Tuberculosis ****	-	-	131	0.6	49	0.1
Infectology	33	0.2	63	0.3	74	0.2
Epidemiology	-	-	49	0.2	99	0.3
Dermatology & venerology	78	0.6	126	0.6	184	0.5
Radiology	185	1.4	280	1.2	480	1.4
Pathology	48	0.4	38	0.2	66	0.2
Forensic medicine	-	-	44	0.2	57	0.2
Laboratory	110	0.8	226	1.0	88	0.3
Hygiene	-	-	44	0.2	202	0.6
Others	836	6.2	893	3.9	2402	7.1

* Number of dentists is not included

** Include specialists of therapeutics, cardiology, gastroenterology, allergology, endocrinology, haematology, nephrology, pulmonology, dietetics, rheumatology, geriatrics.

***Include surgeons, neurosurgeons, thoracic surgeons, cardiovascular surgeons, urologists, plastic surgeons, transplantologists, paediatric surgeons, traumatologists

**** For Estonia specialists of tuberculosis are included to pulmonologists.

Health in the Baltic countries

Hospital beds by speciality at the end of 2006

	Estonia			Latvia*			Lithuania		
	Number of beds	Per 10000 population	%	Number of beds	Per 10000 population	%	Number of beds	Per 10000 population	%
TOTAL	7588	56.5	100	17407	76.1	100	27114	80.1	100
Of them:									
Internal medicine	1465	10.9	19.3	2983	13.0	17.1	4868	14.4	18.0
Rehabilitation	329	2.5	4.3	805	3.5	4.6	1302	3.8	4.8
Surgery (include orthopaedics)	1395	10.4	18.4	3475	15.2	20.0	4651	13.7	17.2
Oncology (include radiology)	99	0.7	1.3	782	3.4	4.5	982	2.9	3.6
Otolaryngology	70	0.5	0.9	188	0.8	1.1	320	0.9	1.2
Ophthalmology	27	0.2	0.4	176	0.8	1.0	312	0.9	1.2
Obstetrics	309	2.3	4.1	642	2.8	3.7	900	2.7	3.3
Gynaecology	216	1.6	2.8	598	2.6	3.4	785	2.3	2.9
Neurology	205	1.5	2.7	1001	4.4	5.8	1657	4.9	6.1
Dermatology & venerology	62	0.5	0.8	116	0.5	0.7	133	0.4	0.5
Infectious	193	1.4	2.5	611	2.7	3.5	582	1.7	2.1
Tuberculosis	270	2.0	3.6	990	4.3	5.7	1291	3.8	4.8
Paediatrics	331	2.5	4.4	876	3.8	5.0	1421	4.2	5.2
Psychiatry	743	5.5	9.8	3139	13.7	18.0	3202	9.5	11.8
Narcology	-	-	-	392	1.7	2.3	272	0.8	1.0
General & nursing	1288	9.6	17.0	430	1.9	2.5	3735	11.0	13.8

* Hospital beds average in 2006; excluding short-term social care beds

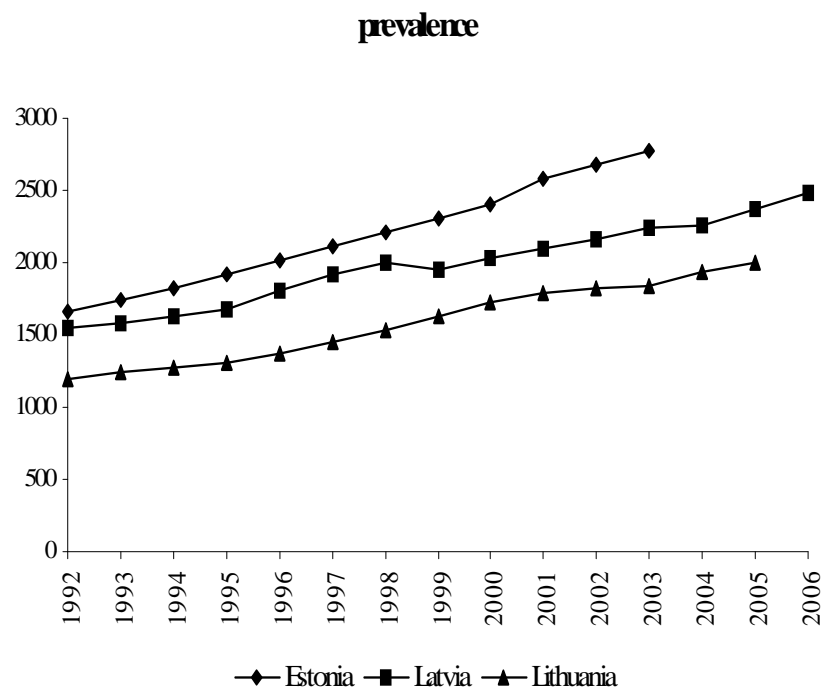
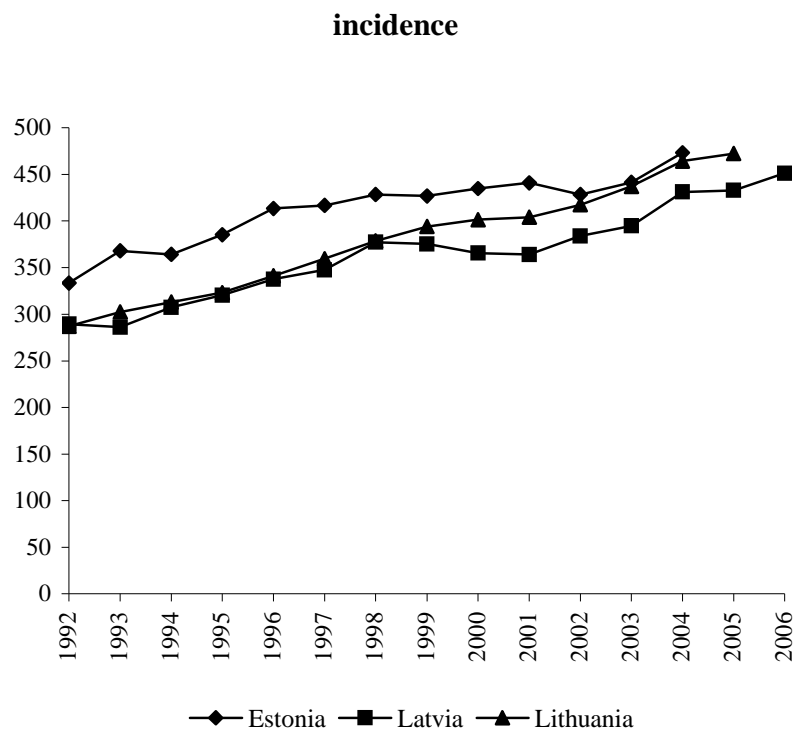
Health in the Baltic countries

Selected notifiable diseases per 100,000 population in 2006*

	Estonia	Latvia	Lithuania
Typhoid fever and paratyphoid	0.1	0.0	0.1
Salmonella infections	33.7	35.0	104.8
Bacillary dysentery	3.9	3.8	6.0
Other intestinal infections	200.4	347.0	293.1
Diphtheria	0.0	1.4	0.0
Whooping cough	11.4	1.3	0.2
Meningococcal infection	0.8	0.5	2.3
Measles	2.0	0.3	0.03
Tick-borne viral encephalitis	12.7	7.4	13.6
Viral hepatitis	20.5	76.0	8.5
A	0.4	2.1	2.9
B	3.3	7.3	3.2
Acute upper respiratory infections	18398.5	7137.0	17269.0
Influenza	51.6	651.4	1767.0
Malignant neoplasms*			
Incidence	473.3	451.1	472.2
Prevalence	2776.6	2482.4	1998.7
Tuberculosis			
Incidence (excl. relapses)	27.8	50.0	61.8
Prevalence	28.9	66.7	222.1
Syphilis	9.3	21.1	9.9
Gonorrhoea	19.1	32.6	12.9
AIDS	2.5	2.3	0.8
HIV carrier	49.7	13.0	3.0

*Data for Lithuania: incidence and prevalence of neoplasms – 2005, Estonia: incidence – 2004, prevalence - 2003

Malignant neoplasms
(per 100,000 population)*

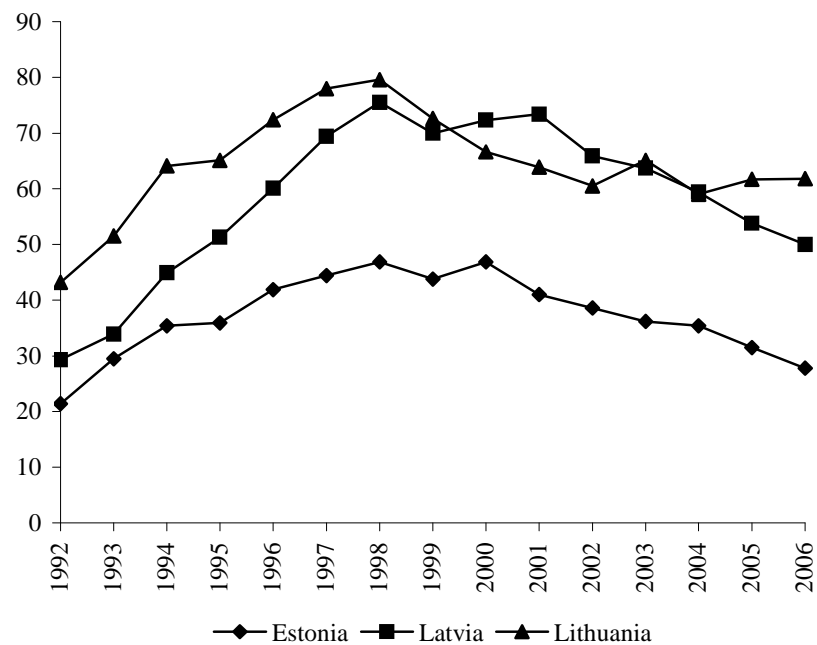


Data for Lithuania - 2005

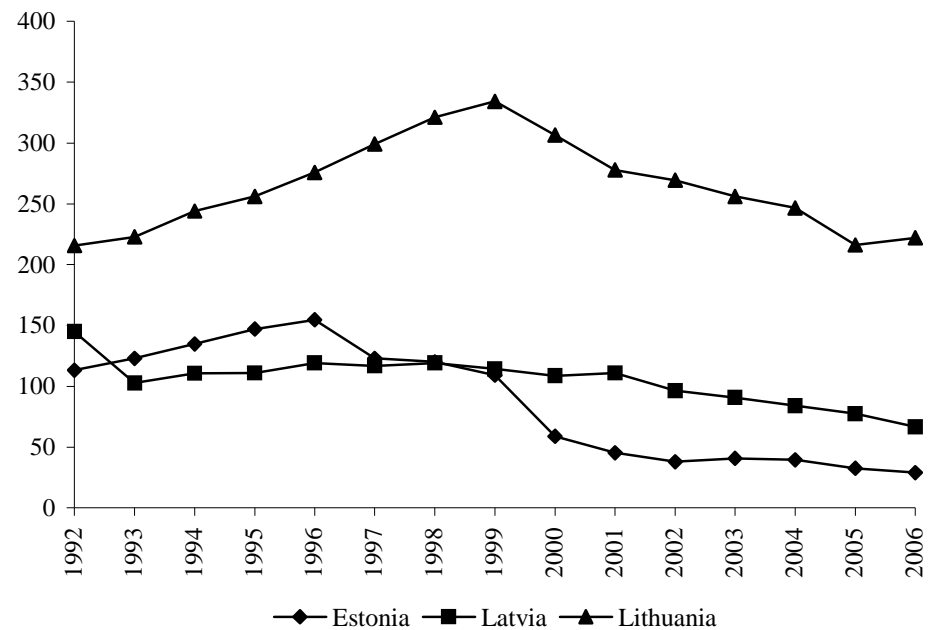
Data for Estonia: incidence – 2004; prevalence - 2003

Tuberculosis
(per 100,000 population)

incidence (excl. relapses)

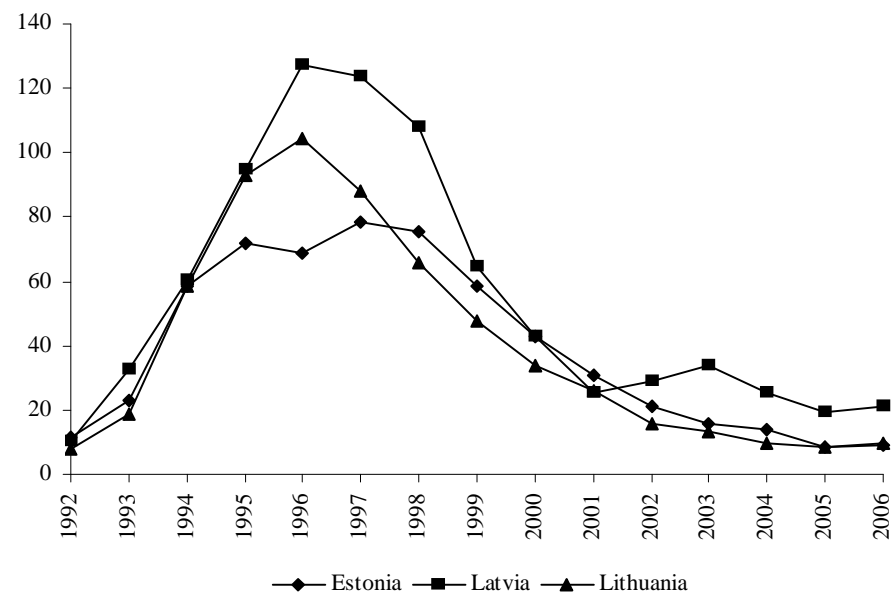


prevalence

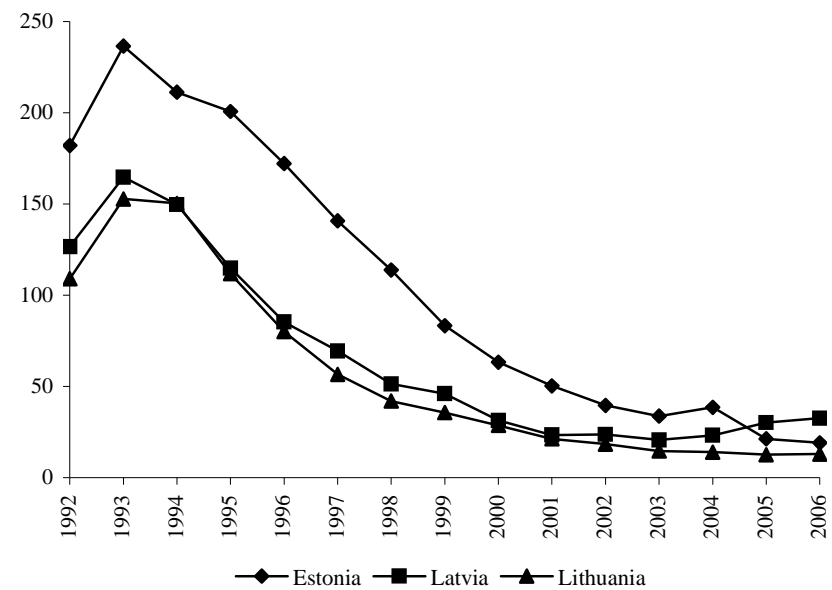


Health in the Baltic countries

Incidence of syphilis
(per 100,000 population)



Incidence of gonorrhoea
(per 100,000 population)



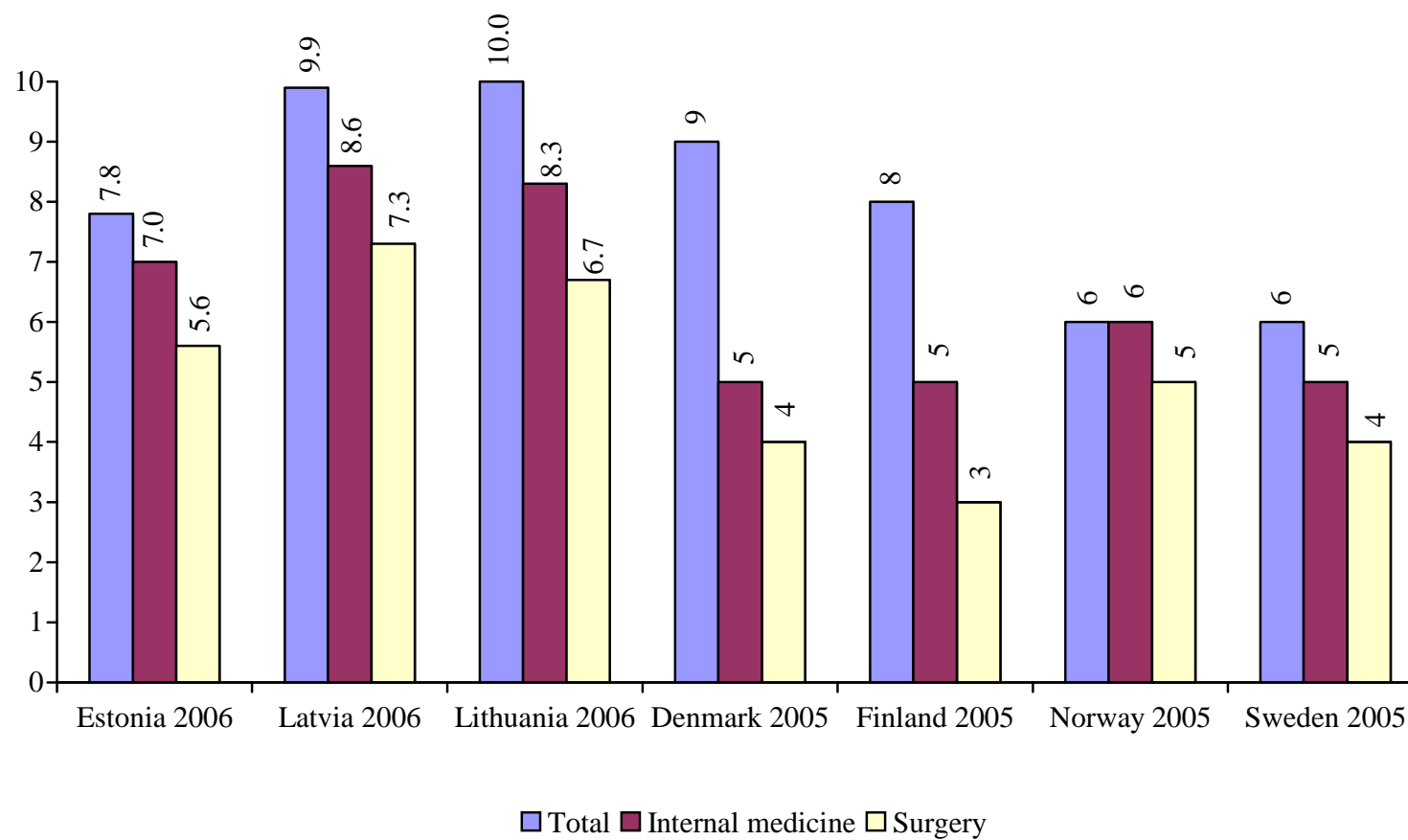
Hospital beds utilization by speciality in 2006

	Estonia					Latvia*					Lithuania				
	Admission per 1000 pop.	Bed occupancy		Average length of stay	Bed turnover	Admission per 1000 pop.	Bed occupancy		Average length of stay	Bed turnover	Admission per 1000 pop.	Bed occupancy		Average length of stay	Bed turnover
		Days	%				Days	%				Days	%		
TOTAL	188.3	270.3	74.1	7.8	34.6	231.3	293.6	80.4	9.9	30.4	232.3	292.3	80.1	10.0	29.1
Internal medicine	40.4	281.2	77.0	7.0	39.2	45.9	301.5	82.6	8.6	36.3	49.8	305.4	83.7	8.3	36.7
Rehabilitation	5.1	261.9	71.8	12.5	20.8	7.4	335.7	92.0	16.1	20.9	4.6	306.7	84.0	24.0	12.8
Surgery (include orthopaedics)	47.7	275.5	75.5	5.6	48.6	58.1	281.2	77.0	7.3	38.9	55.3	273.0	74.8	6.7	41.0
Oncology (include radiology)	2.4	290.1	79.5	8.2	34.2	9.5	269.7	73.9	9.8	27.9	6.6	264.8	72.6	9.3	28.6
Otolaryngology	10.2	282.3	77.3	1.5	193.0	4.2	270.7	74.2	5.3	50.8	5.7	265.6	72.8	4.4	60.9
Ophthalmology	1.2	165.6	45.4	2.9	58.1	3.8	233.8	64.0	4.7	49.3	6.6	267.9	73.4	3.7	72.8
Obstetrics	15.2	210.4	57.7	3.2	65.9	12.3	233.5	64.0	5.3	43.9	12.7	240.4	65.9	5.0	48.4
Gynaecology	11.3	200.1	54.8	2.9	69.4	17.6	258.5	70.8	3.8	67.5	14.8	224.4	61.5	3.5	64.0
Neurology	6.2	275.0	75.3	6.2	43.0	14.7	309.2	84.7	9.6	34.0	17.0	303.3	83.1	8.7	34.9
Dermatology & venerology	1.2	272.0	74.5	9.9	27.4	1.2	309.2	84.7	12.7	24.3	1.1	272.3	74.6	10.1	27.1
Infectious	5.7	236.7	64.8	5.9	40.1	12.1	260.3	71.3	5.8	45.1	7.8	270.1	74.0	5.5	49.4
Tuberculosis	0.9	233.6	64.0	46.6	4.9	2.9	276.9	75.9	41.4	6.9	1.9	326.5	89.4	63.9	5.1
Paediatrics	11.3	233.5	64.0	4.5	50.1	13.7	254.3	69.7	7.1	36.1	17.0	261.0	71.5	6.1	42.7
Psychiatry	10.6	337.4	92.4	16.9	19.9	8.4	345.7	94.7	57.2	6.2	9.0	294.5	80.7	30.6	9.6
Narcology	-	-	-	-	-	10.0	295.4	80.9	5.1	58.3	2.0	293.0	80.3	11.3	25.9
General & nursing	8.6	288.6	79.1	27.9	10.1	4.4	214.1	58.7	10.1	23.8	7.7	342.3	93.8	47.6	7.2

* Without short-term social care beds

Health in the Baltic countries

Average length of stay (days)



Health in the Baltic countries

Discharges by groups of diseases in 2006

	Estonia				Latvia**				Lithuania			
	children		adults		children		adults		children		adults	
	discharges per 1000 pop.	average length of stay	discharges per 1000 pop.	average length of stay	discharges per 1000 pop.	average length of stay	discharges per 1000 pop.	average length of stay	discharges per 1000 pop.	average length of stay	discharges per 1000 pop.	average length of stay
Certain infectious and parasitic diseases	19.5	3.5	4.7	16.6	23.4	6.7	6.2	23.7	28.0	5.5	5.8	24.7
Neoplasms	4.2	3.4	18.8	8.1	3.1	8.0	23.1	9.1	3.2	6.7	21.5	9.6
Diseases of the blood and blood forming organs and certain disorders involving the immune mechanisms	1.8	3.9	1.1	7.1	0.7	6.5	0.8	9.4	1.1	6.3	1.3	8.2
Endocrine, nutritional and metabolic diseases	1.8	5.5	3.7	8.6	2.1	6.7	4.6	8.0	2.2	6.8	4.5	9.5
Mental disorders and behavioural disorders	5.9	8.8	13.0	16.2	9.7	16.7	22.3	23.6	3.6	12.6	12.3	26.8
Diseases of the nervous system	7.1	6.6	4.9	10.1	10.0*	7.9*	13.0*	7.4*	5.6	6.9	12.0	9.9
Diseases of the eye and adnexa	0.8	1.6	1.2	3.2	-	-	-	-	3.0	5.4	6.6	3.6
Diseases of the ear and mastoid process	5.6	3.2	0.9	4.0	-	-	-	-	4.5	6.2	1.5	7.5
Diseases of the circulatory system	1.8	3.1	39.2	10.6	1.9	4.7	46.5	9.1	1.9	4.7	53.0	13.0
Diseases of the respiratory system	54.1	3.5	14.2	5.5	64.6	6.6	12.5	9.0	61.1	6.3	13.8	9.3
Diseases of the digestive system	11.2	2.9	17.3	5.3	19.8	4.5	19.3	6.7	19.5	4.2	18.6	7.1
Diseases of the skin and subcutaneous tissue	3.6	3.7	3.2	8.7	5.8	5.6	4.0	8.6	5.6	4.6	4.2	9.0
Diseases of the musculo-skeletal and connective tissue	3.3	4.4	13.9	7.3	5.8	12.3	18.3	10.4	3.1	6.7	12.6	9.4
Diseases of the genitourinary system	6.3	4.3	12.1	4.6	0.8	5.9	16.6	5.1	6.7	5.8	17.3	4.8
Pregnancy, childbirth and puerperium	0.1	3.4	38.9	3.2	3.0	4.6	24.4	4.7	0.1	3.6	21.0	4.4
Certain conditions originating in perinatal period	17.0	7.7	-	-	15.8	7.1	-	-	21.6	6.9	-	-
Congenital malformations, deformations and chromosomal abnormalities	8.3	5.9	0.6	5.3	5.9	7.3	0.6	6.1	7.6	6.0	0.6	6.1
Symptoms, signs and abnormal clinical and laboratory findings, not elsewhere classified	4.1	3.3	1.3	3.9	0.8	4.3	0.2	5.4	5.2	28.5	1.4	7.8
Injury, poisoning and certain other consequences of external causes	12.2	3.3	11.9	9.7	22.2	4.7	22.9	8.1	17.3	4.2	21.1	8.8
TOTAL	172.0	4.3	185.0	8.2	202.4	6.9	235.3	9.8	200.8	6.5	230.9	10.3

* Diseases of the nervous system and sense organs

**Without short term social care beds

Health in the Baltic countries

Surgical operations in hospitals in 2006

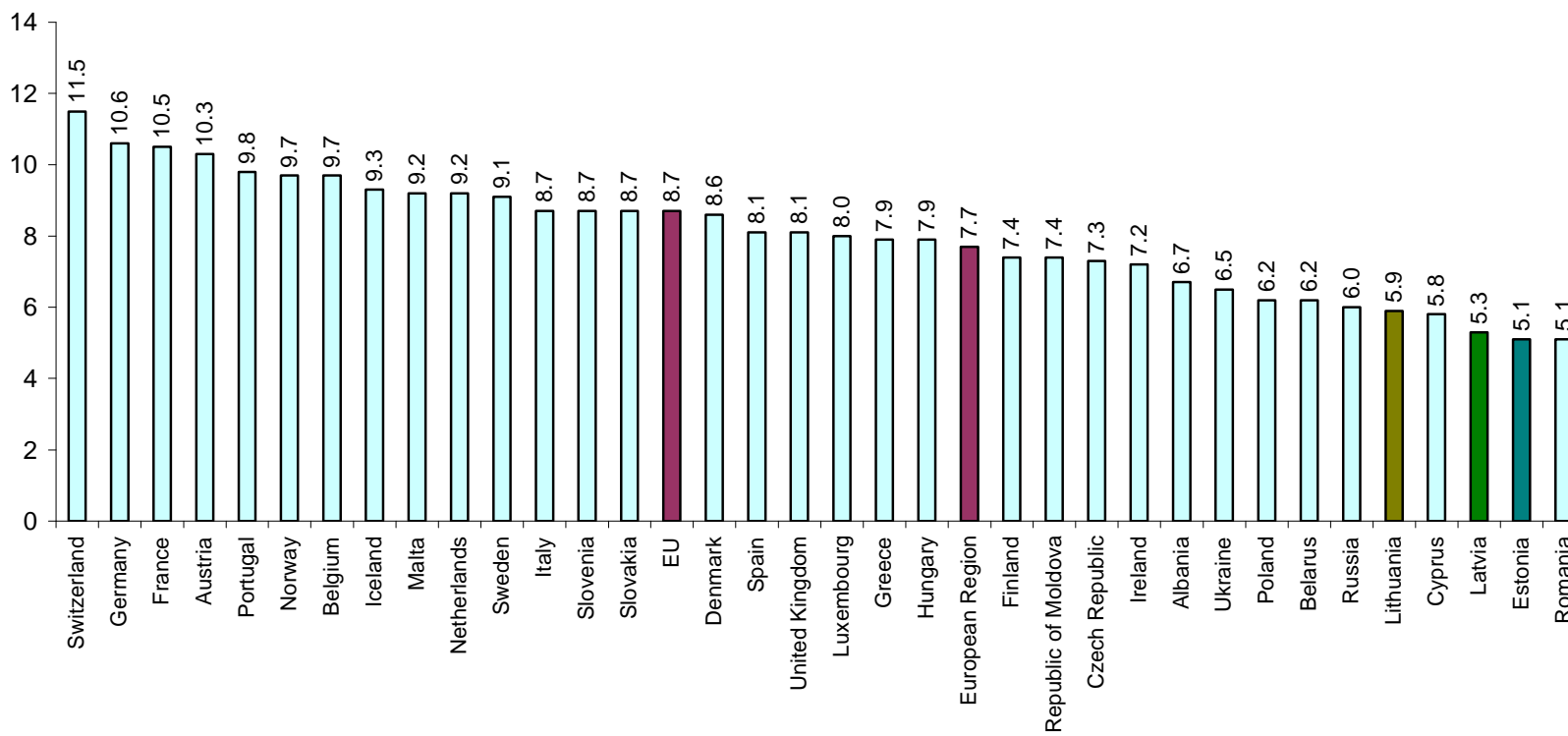
	Estonia			Latvia			Lithuania		
	Number	Per 100,000 population	%	Number	Per 100,000 population	%	Number	Per 100,000 population	%
TOTAL	86 432	6433.1	100	158889	6944.6	100	278911	8217.6	100
On the nervous system	2 299	171.1	2.7	3427	149.8	2.2	7471	220.1	2.7
On the endocrine system	581	43.2	0.7	1963	85.8	1.2	1999	58.9	0.7
On the eye	1 516	112.8	1.8	7431	324.8	4.7	20381	600.5	7.3
On the ear, throat and nose	15 234	1133.9	17.6	8362	365.5	5.2	21875	644.5	7.8
On the respiratory system	1 493	111.1	1.7	1840	80.4	1.2	3426	100.9	1.2
On the heart	3 415	254.2	4.0	8545	373.5	5.4	4657	137.2	1.7
On the vessels	4 071	303.0	4.7	4570	199.7	2.9	16817	495.5	6.0
On the digestive system	12 469	928.1	14.4	19908	870.1	12.5	39964	1177.5	14.3
On the kidneys and ureter	3 014	224.3	3.5	4921*	215.1*	3.1*	7432	219.0	2.7
On the prostate**	1 040	168.1	1.2	-	-	-	7381	466.6	2.6
On the female genital organs***	9 053	1 249.1	10.5	24667	1999.3	15.5	36009	1987.0	12.9
Obstetrical operations***	10 547	1 455.2	12.2	22747	1843.7	14.3	26376	1455.4	9.5
On the musculoskeletal system	14 927	1 111.0	17.3	27580	1205.4	17.4	45197	1331.6	16.2
On the breast	864	64.3	1.0	2271	99.3	1.4	3307	97.4	1.2
On the skin and subcutaneous tissue	4 763	354.5	5.5	13123	573.6	8.3	26708	786.9	9.6
Other procedures	1 146	85.3	1.3	7534	329.3	4.7	9911	292.0	3.6

*) Data for Latvia 2006, including operations on prostate

***) Per 100,000 male population

****) Per 100,000 female population

Total health care expenditure as % of GDP



Note: WHO data 2004; data for Latvia and Estonia - 2005, Lithuania - 2006

*Estonia – calculated using the SHA (OECD)

Obstetric Definitions

Live birth -	Foetus that after complete expulsion or extraction from its mother breathes or shows any other evidence of life, irrespective of the duration of the pregnancy.		rate is used for international comparison including births with a weight of 1000 g or more.
Still birth -	Death prior to the complete expulsion or extraction from its mother of a product of conception after 22 weeks of gestation. Standard rate is used for international comparison including births with a weight of 1000 g or more.	Maternal death -	The death of a woman while pregnant or within 42 days after termination of pregnancy, irrespective of the duration and the site of the pregnancy, from any cause related to or aggravated by the pregnancy or its management, but not from accidental or incidental causes.
Infant death -	Live-born infant that dies during the first year of life.	Abortion -	Spontaneous or induced (legal, therapeutic, criminal) abortion is pregnancy termination or artificial extraction of the product of the conception during the first 22 weeks of gestation.
Neonatal death -	Death occurring at the age of 0 to 27 full days of life (27 days 23 hours 59 min.). The first day of life is considered as day zero.		
Early neonatal death -	Death occurring at the age of 0 to 6 full days of life (6 days 23 hours 59 min.). The first day of life is considered as day zero.	Still birth rate -	The average number of children that would be born per woman if all women lived to the end of their childbearing years and bore children according to a given set of age-specific fertility rates.
Perinatal death -	Foetal deaths and live-born infants that die at the age of 0 to 6 full days of life. Standard		

Sources

1. Statistical Yearbook of Estonia 2007. Statistical Office of Estonia. Tallinn, 2007
2. Statistical data on the website of Ministry of Social Affairs of Estonia <http://www.sm.ee>
3. Statistical database on the website of Statistical Office of Estonia <http://www.stat.ee>
4. Demography 2006. Central Statistical Bureau of Latvia. Riga, 2007
5. Yearbook of Healthcare Statistics in Latvia 2006. Latvian Health Statistics and Medical Technologies State Agency, Health Statistics Department. Riga, 2007
6. Branch statistical overviews and databases of Health Statistics Department, Health Statistics and Medical Technologies State Agency of Latvia
7. Statistical Yearbook of Lithuania 2006. Department of Statistics to the Government of the Republic of Lithuania. Vilnius, 2007.
8. Demographic Yearbook 2006. Department of Statistics to the Government of the Republic of Lithuania. Vilnius, 2007.
9. Health Statistics of Lithuania 2006. Lithuanian Health Information Centre. Vilnius, 2007.

Ministry of Social Affairs of Estonia,
Gonsiori 29, 15027 Tallinn, Estonia
Phone: 372-6269301,
Fax: 372-6992209,
E-mail: info@sm.ee
Website: <http://www.sm.ee>

Health Statistics and Medical Technologies State Agency,
Duntes 12/22, Riga LV 1005, Latvia
Phone: 371-7501590
Fax: 371-7501591
E-mail: medstat@vsmtva.gov.lv
Website: <http://www.vsmtva.gov.lv>
E. Lavendelis, director

Lithuanian Health Information Centre,
Kalvariju 153, LT 08221, Vilnius, Lithuania
Phone: 370-5-2773301
Fax: 370-5-2773302
E-mail: lsic@lsic.lt
Website: <http://www.lsic.lt>
Dr. A. Gaižauskiene, director

Health in the Baltic Countries 2006

Editorial board:

Ministry of Social Affairs of Estonia:

Dr. L. Rooväli, Dr. M. Rätsep, M. Ruuge

Health Statistics and Medical Technologies State Agency of Latvia:

Dr. med. J. Karashkevica, D. Jermacāne

Lithuanian Health Information Centre:

Dr. A. Gaižauskiene, R. Gaidelyte

The edition was prepared by:

Health Statistics and Medical Technologies State Agency, Latvia

I.Karashkevics, Computer layout